

Shepway Community Safety Partnership

Partnership Plan 1st April 2017 – 31st March 2018



Our vision

The Shepway Community Safety Partnership (CSP) aims to build safer, active and more engaged communities. Working with the private, public and third sector and with the collaborative help of communities it will deal with issues of crime and anti-social behaviour to help develop aspired and cohesive neighbourhoods, supporting the wider health and wellbeing agenda in the district.

CONTENTS

Foreword	Page 3
Background and context	Page 5
Local context	Page 6
Organisational changes	Page 7
Kent Control Strategy	Page 8
Supporting families in Shepway	Page 8
South Kent Coastal Commissioning Group	Page 8
Health and Wellbeing Board	Page 9
Safeguarding	Page 9
Probation Services	Page 9
Performance	Page 11
Shepway Community Safety Partnership (CSP) Structure	Page 12
Current CSP priorities 2017-18	Page 13
Priority 1 - Safeguarding	Page 15
Priority 2 - Clean, Green and Safe	Page 19
Priority 3 – Vulnerability and Reoffending	Page 22
Priority 4 - Health & Wellbeing	Page 24
Funding	Page 26
Summary	Page 27
Glossary	Page 28

FOREWORD



**Councillor Jennifer Hollingsbee
Deputy Leader and Cabinet Member for Communities
Shepway District Council**

The Shepway Community Safety Partnership (CSP) sees itself as a robust, resilient leader of delivery in prevention and keeping our communities feeling secure where all of our partners play an equal role in ensuring Shepway is a safe place to live, work and enjoy by tackling the root causes of crime and disorder issues. To promote this equal, joint partnership, we rotate chairs.

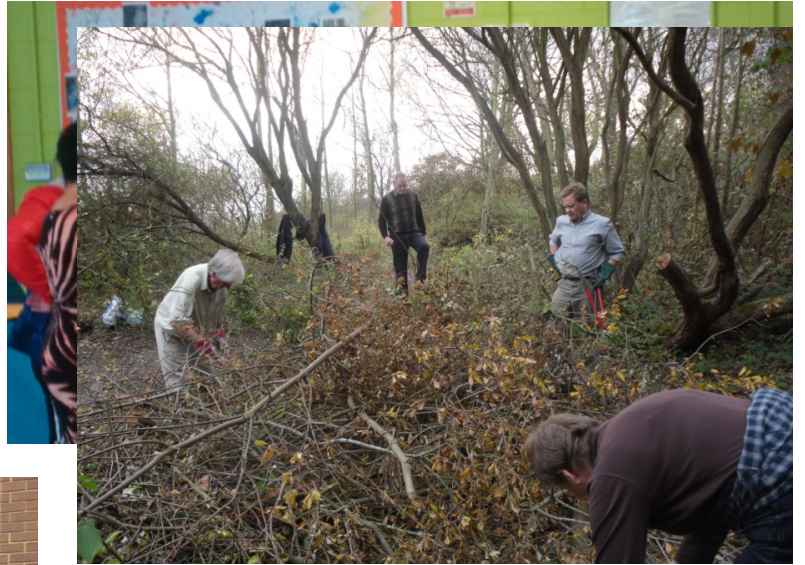
The CSP brings together a number of agencies and organisations concerned with tackling and reducing crime and anti-social behaviour in the Shepway district. Some organisations, like the District Council, the police and health sector, are statutory members, others like voluntary groups and businesses also play an important role.

Our key role is to understand the kind of community safety issues Shepway is experiencing; decide which of these are the most important to deal with; and then decide what actions we can take collectively, adding value to the day-to-day work undertaken by our individual agencies and organisations.

We detail these actions in our Community Safety Plan. The Shepway CSP Annual Plan 2017 highlights how the CSP plans to tackle community safety issues that matter to the local community. This plan is revised annually through reviewing information provided from a wide range of organisations in a strategic assessment, to ensure that current issues can be taken into account into the activities undertaken by the CSP.

It is now time to look at everything afresh to make sure we are on track and working on the priorities that are relevant to the different communities within Shepway. To help us do this we commissioned a Strategic Assessment in December 2016. This Strategic Assessment looked at the range of detailed information that exists about crime, disorder, substance abuse and other community safety matters affecting Shepway. In the light of this information the assessment makes recommendations about how best to keep the Community Safety Plan priorities on track for the next year. In producing our plan we have been mindful of the pledges and priorities of the Police and Crime Commissioner in her crime plan. The Plan considers not only the Strategic Assessment, but also consults with partners who share a local knowledge of the borough's wealth of urban and rural places.

We would like to reassure you that crime and anti-social behaviour continues to fall and is a high priority for Shepway. We continue to work as a partnership to make Shepway a safe place where people wish to work, live and visit. Given the success of the partnership over several years, with year on year reductions in overall crime, now is a good time to concentrate on some longer term strategic issues. The Plan seeks to promote a more holistic approach, with a greater emphasis on prevention and harm reduction. It sets out our performance over the last 12 months, identifies priority areas for the next year and outlines what we are going to do to improve them. Together, we work to tackle the full range of crimes and anti-social behaviour including serious and organised crime, violence, hate crime and drug and alcohol misuse.



BACKGROUND AND CONTEXT

The Shepway CSP is made up of Responsible Authorities (those bodies for whom membership of the CSP is a statutory obligation) and voluntary members:

Responsible Authorities		
Kent Police	Shepway District Council	Kent Fire & Rescue Service
Kent County Council (KCC) Public Health	KCC Children's Services including youth offending and social services	KCC Community Safety Unit
South Kent Coast Clinical Commissioning Group	Kent, Surrey & Sussex Community Rehabilitation Company	Office of the Kent Police and Crime Commissioner

In addition, there are many agencies that support the Partnership and the Shepway Community Safety Unit teams including Turning Point, Kent Addaction, Shepway Mediation, Folkestone Area Partnership Against Crime to name but a few. All are working together to prevent and reduce crime and disorder and improve community cohesion through maximising resources and using targeted action groups.

The Shepway CSP meets on a quarterly basis to address key crime, disorder, anti-social behaviour and other related issues across Shepway. This CSP Board oversees the work of 4 strategic groups which deliver programmes of work for the CSP. These groups include a wide partner network of statutory, voluntary and other groups. Partners will utilise a variety of methods to deliver activity ranging from community engagement through to multi-agency enforcement operations.

Annual funding received from the Kent Police and Crime Commissioner, assists the operational work tasked via the strategic groups. Additional funding is also sought from other funding sources.

Given the evidence presented in the Strategic Assessment for the period 1st November 2015 to 31st October 2016 and the response from partners, we continue to face challenges across our district and the priorities for the Shepway CSP Plan have changed slightly, but for the most part the priorities will be similar to the previous year. The CSP will build on the tactical delivery plans which have been put in place to assist with this work. These action plans can be found in the Appendices.

All crime has increased by 18.3% and victim based crime up by 17.6%. Vehicle crime in Shepway is by 28% placing Shepway 2nd in Kent for its performance in this category. Burglary, robbery and theft of pedal cycles have all reduced. However, some work still needs to be done to tackle and reduce domestic abuse incidents, notably, repeat victims and partnership working is instrumental in achieving this.

Local context

Shepway has outstanding economic assets which makes it a desirable place to live and work right at the heart of the key UK-Europe corridor. The Channel Tunnel at Folkestone links to the three junctions from the M20 motorway and ensures Shepway is highly connected, with easy access to and from UK and European markets. There is outstandingly beautiful countryside and villages, the ancient Cinque Port town of Hythe and the vibrant coastal town where significant private and public investment in the Old Town has created a unique Creative Quarter. Folkestone provides direct access to London in as little as 53 minutes. The development of Folkestone Seafront will bring new businesses and tourists into the area. Shepway District Council is building on current and emerging economic strengths to boost productivity and support business growth. This includes promoting further investment in the area. There is a huge drive to increase the numbers of affordable housing in Shepway with new developments and empty properties being brought back into use.

The latest population figures from the 2015 Mid-year population estimates show that there are 110,000 people living in the Shepway District. This population size ranks Shepway District the 3rd smallest Kent local authority district area. 61% of the district's population live in urban areas with the remaining 39% living in the surrounding rural area and settlements. Folkestone urban area is home to 47% of the total population whilst 13% of Shepway's residents live in Hythe urban area. Shepway has an older age profile compared to the county average, with a greater proportion of people aged 50 and over than the average for the Kent County Council (KCC) area.

In 2015 Shepway District was ranked as the third most deprived district in Kent (ranked 3 out of 12 districts, with the most deprived being ranked 1). Nationally, Shepway ranks 113th out of 326 local authority districts in England. This rank places it within England's most deprived third of authorities.

The county rank of Shepway has moved down 1 place between 2010 and 2015. On the national ranking, Shepway has moved down by 16 positions from 97th in 2010 to 113th in 2015. This indicates that the level of deprivation in Shepway has reduced, relative to other areas in England.

Shepway's unemployment rate is currently 2.0%. This is higher than the county average of 1.6% and the national average of 1.8%¹.

In September 2016 there were 1,295 unemployed people in Shepway which is 4.4% lower (60 fewer people) than August 2016 and 16.7% higher (185 more unemployed people) than September 2015.

Otterpool Park



The Leader of Shepway District Council, Cllr David Monk, announced on 6 May 2016 the council's intention to bid for a garden town in the area surrounding Otterpool Manor Farm.

In March, the government invited local authorities to identify areas for new garden settlements, to increase the overall number of new homes being built nationally. The Department for Communities and Local Government have produced guidance

¹ NOMIS Claimant Count Sept 2016

on '[Locally-Led Garden Villages, Towns and Cities](#).' The government have offered to support local areas wanting to deliver a garden village, town or city.

Otterpool Park Garden Town could see up to 12,000 new homes being built over the next 30 years within easy reach of nearby villages, towns and the countryside, but with its own businesses, schools and parks.

Organisational changes

Police and Crime Commissioner (PCC)

PCC's are responsible for the appointment of Chief Constables, holding them to account for the running of the force, setting out a Police and Crime Plan based on local priorities, setting the local precept and force budget and making grants to external organisations. The current PCC for Kent, Matthew Scott, was appointed in May 2016 and will remain in office for a period of four years.

The PCC has pledged to continue to support a number of agencies through the main policing grant and has announced his commitment to his wider duties around crime and community safety. Funding for Community Safety Partnerships has been confirmed for 2017/18 as the same levels as 2016/17 and will be used to address our local priorities. The Police and Crime Commissioner must produce a Police and Crime Plan that sets out his vision and priorities for policing and community safety, as well as the objectives and ambitions that Kent Police will be held to account on.

The plan, refreshed in August 2016 and running to March 2017, aims to deliver a first class policing service in this county meeting the needs and expectations of communities. During his election campaign, Matthew Scott outlined his Six Point Plan for delivering effective policing in Kent. These have now been incorporated into the Police and Crime Plan:

1. Cutting crime and reducing reoffending
2. Delivering value for money
3. Visible, effective and dedicated policing
4. Putting victims at the heart of the justice system
5. Tackling the misery caused by abuse, substance misuse and anti-social behaviour
6. Revolutionising the way in which people with mental illness interact with the police

Kent Police

Three policing divisions, East, West and North ensure local policing is at the heart of the new Policing model and there has been a significant increase in neighbourhood constables and sergeants to provide strong local leadership across the county. Like all public services, Kent Police is subject to the Government's Comprehensive Spending Review decisions. Over the last four years, the force has made over £62million of savings as a result of grant cuts. For 2016/17 the police grant cut is 0.6%. However, Kent Police will still need to manage the cost of inflation and other cost pressures which means the force needs to find £8.7million of savings in 2016/17 and over the next four years it will need to find £33million of savings.

Kent Control Strategy – Kent Police

Child Abuse and Exploitation

- The most common reasons for children to be trafficked are sexual exploitation and criminal exploitation

Human trafficking/modern slavery

- Modern slavery is the 'umbrella' for the following: domestic servitude, sexual exploitation, labour exploitation, forced labour, debt bondage. Trafficking is for the purposes of exploitation and this includes child trafficking

Domestic Abuse, serious violence and sexual offences

- 1 in 4 women in the UK experience domestic violence

Gangs

- Intelligence shows a strong presence of 'county lines' travelling out of London to Kent in order to sell drugs, usually Class A

High harm impact crime

- Vulnerable persons as targeted victims

Counter terrorism and domestic extremism

- Identify community intelligence and open source intelligence particularly around officer safety

Supporting families in Shepway

The Government, through the Department of Communities and Local Government (DCLG) has placed a significant focus on supporting families with multiple and complex needs, including parents not working, children not in school, and those causing serious problems such as youth crime and anti-social behaviour. Working with the County Council, Shepway has seen excellent results in improving the outcomes of families receiving this support.

South Kent Coast Clinical Commissioning Group (SKC CCG)

Since 1 April 2013, Clinical Commissioning Groups (CCG's) have become 'responsible authorities' on CSP's. Schedule 5, Paragraph 84 of the Health and Social Care Act 2012 replaces primary care trusts with clinical commissioning groups as responsible authorities on CSP's from April 2013. This means that the CCG's now have a statutory responsibility to work in partnership with other responsible authorities to tackle crime and disorder. The act places a duty on CCGs to:

- Participate in a strategic assessment of crime and disorder, anti-social behaviour, and drug and alcohol misuse for the CSP area or areas in which they fall.
- Contribute to the development of local strategies that effectively deal with the issues identified.

Joining their local CSP's gives CCG's more influence in shaping local action to tackle crime and the causes of crime, for example the delivery of action on drugs, alcohol, crime and disorder. In Shepway the South Kent Coast CCG and KCC Public Health are actively involved and jointly chair a CSP sub – group. The SKC CCG covers a large part of Dover and Deal and most of the Shepway District. It is a key body delivering the Health and Wellbeing agenda in partnership for Shepway.

Health and Wellbeing Board (HWBB)

The South Kent Coast Health and Wellbeing Board brings together key organisations and representatives of the public to work together to improve the health and wellbeing of local communities. Kent Public Health alongside the two local authorities (Dover District Council and Shepway District Council), South Kent Coast Clinical Commissioning Group, (who are responsible under the reforms for commissioning health services locally) and patient and public representatives are all part of this Board. The key themes for health and wellbeing are drawn from the South Kent Coast Joint Strategic Needs Assessment and other relevant partnership plans and strategies. The work of the CSP etc is crucial in helping the HWBB meet its aims.

Safeguarding

All public agencies now place the safeguarding of children, young people and vulnerable adults at the heart of their practices.

The Children Act 1989 states that the child's welfare is paramount and every child has a right to protection from abuse, neglect and exploitation. Statutory guidance on making arrangements to safeguard and promote the welfare of children by public agencies is set out under Section 11 of the Children's Act 2004.

Safeguarding work now incorporates the issues around child sexual exploitation, female genital mutilation, modern slavery and radicalisation (PREVENT strategy). The Safeguarding sub-group of the CSP as well as the duties incumbent upon individual public agencies means this work is of high priority in Shepway.

- The Care Act 2014 (updated in March 2016) has reformed the law relating to care and support for adults and support for carers. It makes provisions around safeguarding adults from abuse or neglect; care standards and; establish and makes provision about Health Education England and the Health Research Authority. This legislation also affects safeguarding investigations, governance and information sharing. In relation to safeguarding, the Care Act placed new duties on councils and for adult safeguarding this includes the stipulation to:: Make safeguarding adults boards statutory;
- Make safeguarding enquiries a corporate duty for councils;
- Make serious case reviews mandatory when certain triggering situations have occurred and the parties believe that safeguarding failures have had a part to play;
- Place duties to co-operate over the supply of information on relevant agencies;
- Place a duty on councils to fund advocacy for assessment and safeguarding for people who do not have anyone else to speak up for them;
- Abolish, on human rights grounds, councils' power to remove people from insanitary conditions under section 47 of the National Assistance Act, albeit with recourse to the Public Health Act still possible for nearly the same outcome.

Probation Services

Throughout 2014 and 2015, the Ministry of Justice worked with Probation Trusts to prepare for the implementation of new structures under the Transforming Rehabilitation Programme. The programme sees the creation of a new National Probation Service (NPS) working with high risk offenders and 21 Community Rehabilitation Companies (CRCs) managing medium and low risk offenders. The preferred bidder for the Kent, Surrey and Sussex CRC has been announced as Seetec Business Technology Centre. The Transforming Rehabilitation reforms include a number of sentencing changes, which may impact on CSP re-offending data in the future. The changes that have been enacted in the Offender Rehabilitation Act 2014 include most importantly, the extension of supervision of Licence after release to all offenders who receive a custodial sentence of less than 12 months; extending probation

supervision to the 50,000 offenders sentenced each year to less than 12 months. This is a cohort of offenders with whom Probation Trusts have never worked with, as this cohort of offenders has never before been subject to statutory supervision.

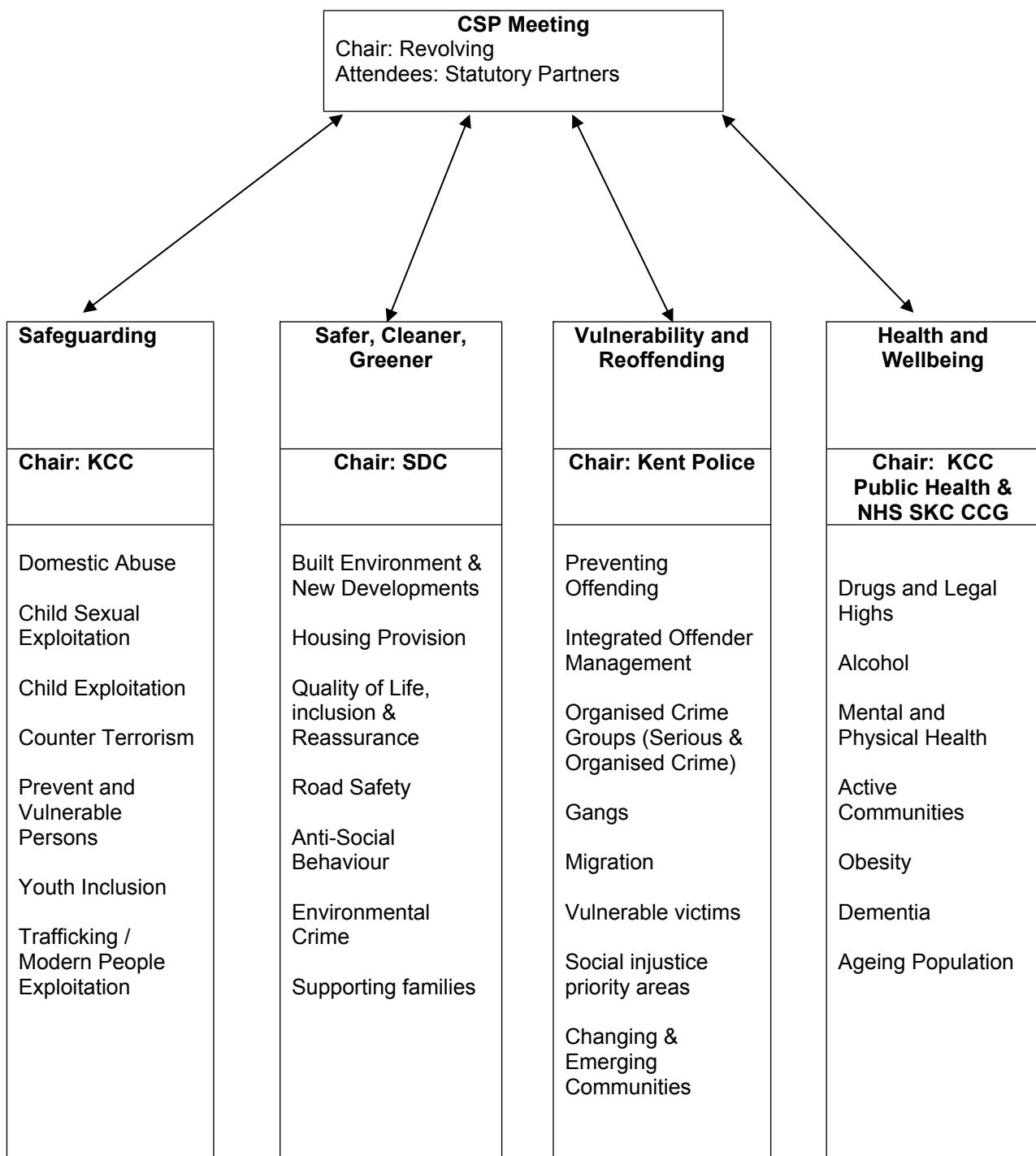


(Diagram taken from the Kent Community Safety Agreement 2014-2017)

PERFORMANCE (November 2015- October 2016)

Type of Crime	Last Year – Nov 14- Oct 15	This Year – Nov 15 to Oct 16	Difference	Per 1,000 population- based on mid 2015 pop estimates	County Rank- 12 = worst
Victim based crime	5786	6810	1021	61.9	6 th
Violent crime	2283	2960	677	26.9	7 th
- Violence against the person	2012	2646	634	24.1	6 th
- Sexual offences	199	257	58	2.3	8 th
- Robbery	72	57	15	0.5	5 th
Burglary Dwelling	310	255	55	2.3	5 th
Burglary Other Than Dwelling	283	257	26	2.3	1 st
Vehicle crime	289	370	81	3.4	2 nd
- Theft of motor vehicle	86	96	10	0.9	2 nd
- Theft from motor vehicle	203	274	71	2.5	1 st
Vehicle interference	33	62	29	0.6	1 st
Theft and handling excluding vehicle interference	1427	1636	209	14.9	7 th
- shoplifting	492	691	199	6.3	10 th
- theft of pedal cycle	75	60	15	0.5	2 nd
- Other theft	860	885	25	8	4 th
Criminal damage	1161	1270	109	11.5	6 th
Crimes against society	474	599	125	5.4	10 th
Drug offences	151	187	36	1.7	12 th
Possession of weapons	35	43	8	0.4	10 th
Public order offences	205	243	38	2.2	8 th
Other crimes	83	126	43	1.1	8 th
All crime	6260	7409	1149	67.3	6 th

SHEPWAY COMMUNITY SAFETY PARTNERSHIP STRUCTURE 2017



PRIORITIES 2017-18

The Shepway CSP met in 2017 to decide the key priorities for the Partnership over the coming year based on analytical data and emerging issues which the partners highlighted. Identified below were the 4 work streams which formed the sub groups and the key work areas for each of these are:

SAFEGUARDING	Domestic Abuse Child Exploitation including sexual exploitation Female Genital Mutilation Counter Terrorism, Prevent and vulnerable persons Youth inclusion Trafficking people exploitation/Modern Day Slavery
CLEAN, GREEN AND SAFE	Built environment including new developments Housing provision Quality of Life and community reassurance Anti-social Behaviour and environmental crime Community reassurance and cohesion Road and fire safety
VULNERABILITY AND REOFFENDING	Preventing offending and reducing reoffending Integrated Offender Management Preventing Offending Integrated Offender Management Organised Crime Groups (Serious & Organised Crime) Gangs Migration Vulnerable victims Social injustice priority areas Changing & Emerging Communities
HEALTH AND WELLBEING	Drugs and legal highs Alcohol Mental and Physical Health Healthy communities Obesity Dementia Ageing Population

PRIORITY LEADS

Lead agencies for each of the priorities were identified and given the responsibility for developing and delivering, with partners the action plans to deliver the Shepway CSP priorities (see overleaf.)

Safeguarding	KCC
Clean, Green and Safer	Shepway District Council, CSU
Vulnerability and Reoffending	Kent Police, CSU
Health & Wellbeing	KCC Public Health and NHS SKC CCG NHS SKC Clinical Commissioning Group

PRIORITIES FOR SHEPWAY CSP 2017-18

PRIORITIES	
CROSS CUTTING THEMES	Safeguarding (including Prevent)
	Clean, Green and Safer
	Vulnerability and Reoffending
	Health and Wellbeing
	Domestic Abuse, Child Exploitation, Trafficking
Anti-social behaviour, quality of life, community reassurance	
Integrated Offender Management, Troubled Families, Organised Crime Groups, vulnerable victims, social injustice priority areas, changing/emerging communities	
Drugs and legal highs, alcohol, mental health, obesity, dementia	

Underlying themes:

- Domestic Abuse, Child Exploitation, Trafficking
- Anti-social behaviour, quality of life, community reassurance
- Integrated Offender Management, Troubled Families, Organised Crime Groups, vulnerable victims, social injustice priority areas, changing/ emerging communities
- Drugs and legal highs, alcohol, mental health, obesity, dementia

PRIORITY 1: SAFEGUARDING

Rebekah Button

Integrated Family Service Manager
Shepway Specialist Children's Services
Chair of the Shepway CSP Safeguarding subgroup



Key outcomes:

- Safeguarding – all activities meet the needs of all members of the community. The community is aware and agencies know where to get the information.
- Domestic Abuse – reduce and prevent domestic abuse, raise community and agency awareness of domestic abuse.
- Child Sexual Exploitation – visible community and agency awareness of child sexual exploitation. Recognition of those at increased risk.
- Prevent – recognition of those at increased risk of radicalisation, use of Prevent Channel processes, visible community awareness with increased training and publicity.
- Youth inclusion – services designed by young people to meet young people's needs. Involvement of young people at an earlier age in community activities.
- Trafficking/Modern Day Slavery – visible community awareness with increased training and publicity.

As Chair of the Shepway CSP Safeguarding sub group and as the Kent County Council Integrated Family Services Manager for Shepway I have a clear insight into the needs of this group. Safeguarding covers many strands and emerging issues including child sexual exploitation and human trafficking which require a more targeted approach and awareness raising of this national issue. Shepway has on its doorstep the Channel Tunnel and Dover port which by their significant location as the corridor from Europe places a greater emphasis on agencies being aware that some of these cases could be going through the District.

As a group we are determined to bring these often hidden crimes and behaviours out into the open. We want to find out more about these issues so that we can work together to improve the confidence of victims to report these. We need to take action to break down the barriers that exist to prevention and identification due to victim fear and intimidation. We will take a preventative approach by working together in partnership to identify potential victims and perpetrators at an early stage. Work will include influencing partners strategies and policies around honour based violence, female genital mutilation, sexual violence, exploitation and human trafficking.

The Safeguarding subgroup links closely with the Local Children's Partnership Groups (LCPG) and Kent Safeguarding Children's Board (KSCB). The subgroup is represented at the LCPG, which works as the local driver for the county Children and Young Persons

Other areas of work will include domestic abuse which has seen significant developments in recent years. The age where domestic abuse can be categorised as a crime has reduced to 16 years of age, previously up to age 18 cases were dealt with under child protection guidance. With the introduction of coercive control on the 29th December 2015 more awareness raising on this category is something that the group will be looking at. The 'One Stop Shop' Drop In for domestic abuse continues to be supported but requires developing further to include more key agencies.

Adolescent abuse on parents//carers and siblings has been highlighted as an issue over the last couple of years, particularly through the family support workers who are engaging with the Supporting Families programme. Bespoke pilot programmes are being trialled to engage with this work.

Preventing Violent Extremism has been quite significant in the news recently and Kent has a Channel Project which refers individuals that may have the vulnerabilities to be radicalised. The work of the Channel initiative supports the young person and offers focussed targeted interventions to meet their needs. The work of the Shepway CSP Safeguarding group has been looking at training and raising awareness around the Prevent agenda. All Shepway District Council staff have received basic Preventing Violent Extremism awareness raising training particularly with an emphasis on spotting the signs of potential radicalisation and what the Channel project is about including mechanisms to refer.

Domestic Abuse

The Shepway 'One Stop Shop' Drop In weekly service for domestic abuse victims is a multi-agency provision consisting of solicitors, domestic abuse workers, police, KFRS, benefits agency and a health visitor being available to offer advice and support to victims of domestic abuse. The Drop In is every Wednesday from 12.30 to 14.30 at the Folkestone Early Years Centre. Over the last year visitors to the 'One Stop Shop' have increased by 10.9% with 183 people assisted.

The Community Domestic Abuse programme (CDAP) which is a 27 week course for perpetrators of domestic abuse to attend has worked with 14 men over the last year.

Adolescent Abuse against parents/carers – there were some funds allocated for a bespoke pilot programme to help families where adolescent abuse occurred within the family. This work saw 8 families helped under the pilot scheme. A further programme of work under this theme is being developed.

Since July, the subgroup held a Domestic Abuse conference which was positive. Along with professionals and other bodies, there was also 50-60 young people in Year 12 and 13 from East Kent College and secondary schools. The theme of the conference was around coercion, control and teenage relationships.

Adult Abuse Week took place on the 3rd October and along with a stall there was the Health Bus in place to give people free checks. The event was successful as lots of people passing by were interested in what the event was about and seemed to give out a lot of domestic abuse, adult abuse, and rogue trader leaflets.

The subgroup ran two DHR workshops in November, one in the morning and one in the afternoon.

Child Sexual Exploitation and Trafficking



Officers at Shepway District Council and KCC have been trained to deliver awareness around Child Sexual Exploitation (CSE). Front line staff have already been trained in this work. The subgroup has now established close links to the multi-agency co-located Child Sexual Exploitation Team (CSET), Op Willow. The Multi-Agency Sexual Exploitation strategic group (MASE) has county oversight of child sexual exploitation.

The subgroup is looking at writing a peer education package around CSE. The subgroup is looking to work with one of the local universities to develop this.

Taxi Driver CSE Training

Over 150 Taxi drivers in Shepway were given the opportunity to have training to understand Child Sexual Exploitation,

recognise the signs that someone is vulnerable and how to report and help anyone they may come across in the district that may need their help. The training was well received and informative as the drivers were able to ask questions when they were unclear around the procedures. Further training will be provided for the taxi drivers that were unable to make this session. This training was identified as best practice by the Local Government Association and showcased at their national taxi licensing conference in Central London in November 2016.

The Shepway CSP paid for CSE Amelix online education tool for all primary and secondary schools. Amelix is Kent based and funded by the Home Office and was developed from the Rotherham enquiry. The tool is upgraded every 48 hours and includes resource materials, lesson plans, case histories and a live chat facility with someone answering questions.

Preventing violent extremism

Members of staff from Shepway District Council and KCC have been trained to deliver some training around Prevent. All Council staff are completing an e-learning package on this subject with additional training being planned.



‘Safeguarding the Next Generation’ – Youth Conference

The conference took place in June 2016 and was an exciting and innovative way to give all the students a chance to learn about safeguarding, how to take care of themselves and their peers, in an adult environment. The conference was free to attend and open to all of the year 9s in the district. The rationale behind this conference was to exhibit to the students that, as research shows, young individuals vulnerable to poor outcomes are disproportionately likely to experience multiple problems that can extend to later life. Therefore, the five overlapping areas of poor



outcomes which had been identified were addressed throughout the day, i.e. Substance Misuse, NEETs, Teenage Pregnancy, Truancy and Behavioural Difficulties to ensure pupils in attendance were aware of how these topics could affect them. The day consisted of highly interactive presentations from a variety of both county and national subject leaders in Child Sexual



Exploitation and Prevent amongst so all students were able to ask questions and get further information which may not normally have been readily available to them.

PRIORITY 2 – CLEAN, GREEN AND SAFE

Shaun Taylor

Communities Team Leader

Shepway District Council

Chair of the Shepway CSP Clean, Green and Safe sub group



Key outcomes:

- Built environments and new developments – improving standards within residential areas leading to increased community wellbeing.
- Road Safety – a reduction in the number of casualties on the road network within Shepway.
- Anti-social Behaviour – a reduction in the number of complaints.
- Community Cohesion and Inclusion - increased number of participants in organised activities. Reported increased in wellbeing and satisfaction from local communities.

Key aims for this subgroup are to ensure that the Shepway District is not only a safe place but an environmentally friendly one where people want to live, work and visit.

Working alongside Kent Police and the Environmental Protection team at the Council is significant towards achieving these goals. The work of the Shepway Community Safety Unit is not only to deal with complaints and issues as they arise, but to develop preventative and diversionary activities to reduce incidents occurring. Our approach to tackling ASB focuses on its prevention, taking positive action and protecting victims and witnesses. By working together we are building more resilience in communities to challenge the corrosive effect of ASB intimidation and harassment caused by a minority of people. Some funding and signposting to Shepway Mediation has helped with neighbourhood disputes and Restorative Justice work.

Some communities, groups and individuals are more likely to become victims of crime because of specific vulnerabilities. Protecting vulnerable people through safeguarding and prevention, along with risk assessing each ASB call that comes into the police and council has helped to reduce crime and increase confidence, building safer and stronger communities.

The weekly Community Safety Unit meeting looks at day to day issues across the District and develops projects to tackle repeated hot spot locations and incidents. The work links into the Supporting Families programme working alongside officers supporting families to ensure that their clients needs are considered and met where feasible. Over the last year there has been increased work around the issue of homeless people in Shepway and a working group has been looking at what measures can be put in place to support them but being mindful that where required enforcement activity can be instigated which led to rough sleeping becoming part of the Public Space Protection Order which was implemented in May 2015.

Diversions activities include the Shepway Health and Positive Engagement Programme working with young people signposted onto the course which has become oversubscribed and seen those attending being more confident and positive at the end of the 6 weeks. Contact with these families is kept fluid with invitations to schemes run during school holidays to keep them engaged.



Significant support and funding has been given to the Urban Pastors scheme particularly linking these volunteers into areas which require an additional supportive presence in the community at key times and locations to prevent anti-social behaviour, crime and increase personal safety through support and help on the scene.

Environmental work has included community clean ups, litter picks, and graffiti removal. Officers from the Community Safety Unit working alongside local residents have tackled environmental work within their communities and assisted in giving a sense of

ownership and pride in areas that they live.

ACTIONS UPDATE

Anti-social behaviour

There is a weekly multi-agency Clean, Green, Safe and High Risk ASB meeting hosted by Shepway District Council to deal with issues of ASB. When required 'task and finish' groups are set up from these meetings to deal with a specific issue that requires a multi-agency targeted approach.

Urban Pastors – is a project run by Cheriton Baptist Church with the support from Churches Together Folkestone. The Shepway Community Safety Unit and Kent Police help guide the Urban Pastors in directing them to appropriate locations and offering support. There are a number of volunteers supporting this service which operates in areas of need particularly the Folkestone Harbour ward during evenings when there is a high footfall and at specific events in the district. They also engage with young people in areas where they gather to offer support, advice and signposting to diversionary activities. Further information can be accessed via the below website:



<http://cheritonbaptistchurchfolkestone.weebly.com/urban-pastors.html>

Shepway Health and Positive Engagement project – this 6 weeks course has been operating for the last year run by Gillingham Football Club and Folkestone Sports Centre for young people who need extra support and help with self esteem, confidence and detaching those individuals from ASB who would benefit from diversionary activities. Funding and support has come from various sources including the Shepway CSP, Police Crime Commissioner and Folkestone Town Council.

Green Gym - the Green Gym under the guidance of an officer from the Community Safety Unit, continues to run weekly. It is significant in working on key areas that require a bespoke approach to clearance work. By engaging individuals into this scheme has not only

improved the appearance of the district but given participants a sense of pride and improved their health and wellbeing.

With the introduction of the Anti-Social Behaviour, Crime and Policing Act 2014 several measures have been put in place locally.



A Public Space Protection Order (PSPO) was implemented in May 2015 after public consultation covering street begging, street drinking, the taking of new emerging drugs (legal highs) and sleeping in a public place within the area designated in the Order where it is likely that any of these activities would be carried out and having a detrimental effect on the quality of life of those in the locality. The area identified is from M20 Junction 12 down Horn Street, Seabrook along to and including the Warren, Old Dover Road, New Dover Road then in a westerly direction along Dover Hill (B2011) and Churchill Avenue (A259) and M20 Junction 12.

As per the Anti Social Behaviour, Crime and Police Act 2014, Public Spaces Protection Orders now replace some pre-existing orders, e.g. Dog Control Orders (DCOs). As part of this, Shepway will be looking to replace all of their DCOs to PSPOs to reflect clearer boundaries and restrictions for our residents. The work will start in early 2017. Additionally, a second PSPO was implemented to tackle issues of dog fouling and to protect the safety of young children in a recreation ground in New Romney.

Under the new Act the Community Trigger can help anyone who feels nobody is dealing with the anti-social behaviour or hate crime problems they are experiencing. If they have already reported the problem to the council, police or housing provider, the Community Trigger is a way for them to ask agencies to review their case. For Shepway there have been 2 Community Trigger investigations since the Act was introduced.

PRIORITY 3 – VULNERABILITY AND REOFFENDING

Inspector Kevin Stephens

Kent Police

Chair of the Shepway CSP Vulnerability



Key outcomes:

- Gangs – reduce impact of gang activity within Shepway
- Bespoke communities – cohesive communities working together for the collective benefit of all.
- Preventing Offending
- Integrated Offender Management
- Organised Crime Groups (Serious & Organised Crime)
- Gangs
- Vulnerable victims
- Social injustice priority areas
- Changing & Emerging Communities - understanding the effects of migration on local communities, establishing a cohesive approach and understanding for all communities.

Kent Police is well placed to assist with highlighting this work where it requires a multi-agency approach. Several police operations over the last few months have received support from agencies including Turning Point which works with substance misuse users. This help has assisted in directing those requiring help to these services during the targeted operations. The group will be looking at profile mapping to gain a greater insight into the needs of communities and how best to offer support.

Changing communities and the mapping of new and emerging communities is key to the development of this group. There are areas within Shepway which have become more diverse and mapping these and how to engage and integrate these communities into society is an area of work that the Community Liaison Officer at Kent Police is assisting with supported by key agencies. Alongside this there are travelling communities and Shepway District Council have appointed an officer to engage in this work together with the KCC Gypsy Traveller Unit.

ACTIONS UPDATE

A two day multi-agency operation took place earlier this year. This included gathering intelligence, issuing search warrants, stop checks and covert observations. A number of arrests were made and drugs, cash and offensive weapons were seized. The work of the action group led by Kent Police includes understanding the effects of migration on local communities working alongside the Community Liaison Officer for Shepway who links effectively with migrant communities and the Kent County Council Traveller Unit to establish support networks and understand the needs of these communities.

January 2016 saw the start of a Roma community hub at the Folkestone Early Years Centre. These are Drops Ins primarily for the Eastern European community but not solely aimed at them. Initially the hub will be encouraging families to come in for coffee, cakes, cookery classes etc then perhaps move on to cover dentistry, health services etc as these communities were not currently accessing these services. The police, fire brigade and Social Services would also be available at the hub to offer advice. The Hub is currently looking at changing its venue to accommodate larger numbers of people.



PRIORITY 4 - HEALTH AND WELLBEING

Ivan Rudd

KCC Public Health Specialist
Joint Chair of the Shepway CSP Health and Wellbeing sub group



Hilary Knight

Project Manager
NHS South Kent Coast CCG
Joint Chair of the Shepway CSP Health and Wellbeing sub group



Key outcomes:

- Improve prevention and identification of alcohol harm – increase in activity rate in Shepway.
- Co-ordinate self care – agencies will be aware of the early help, preventative services available in their area and how to signpost families.
- Protecting children and young people from alcohol harm and grow good mental health – reduction in A & E substance misuse activity.



The Health and Wellbeing sub group is jointly chaired by myself from KCC Public Health and Hilary Knight from the South East CCG. The work of the group compliments many strands including the Kent Alcohol Strategy Group.

The group is focussing on the Intervention and Brief Advice (IBA) training for front line staff in organisations to help identify those in need of services and signposting them. There is an emphasis on encouraging middle aged women to access Turning Point services as this is a growing target group that quite often do not perceive that they may be developing a problem. Scratch cards can be used to highlight alcohol consumption are being rolled out for agencies to use and proving popular. One of the key targets of the group is to obtain

a better identification of high risk client groups. A pilot project supported by CSP funding will be offering teenage girls “cheerleading” experience to assist in building their confidence, self esteem as well as a form of exercise and keeping healthy.

The sub group includes members from the Council's licensing team, Kent Police, working in partnership with licensed premises and Folkestone Area Partnership Against Crime to identify and manage alcohol problems when they occur.

Alcohol and drug misuse lead to health and social problems. We know that violent crime such as assaults and domestic abuse are often linked to drug and/or alcohol use. Drug misuse and alcohol can be attributed to some crimes such as burglary and robbery and closely linked to ASB incidents. We have seen some positive changes in relation to alcohol and drug related crime but we know that there is more we can do. We will continue to monitor trends in alcohol related crime and ASB and to develop locally based schemes and initiatives that aim to prevent it. We will respond effectively to those who want to access treatment and alcohol dependency. Our work will continue to create stronger links with commissioners of support services to assist in the development of integrated pathways and responses across services, particularly those highlighted in the Kent Alcohol Strategy.

ACTIONS UPDATE

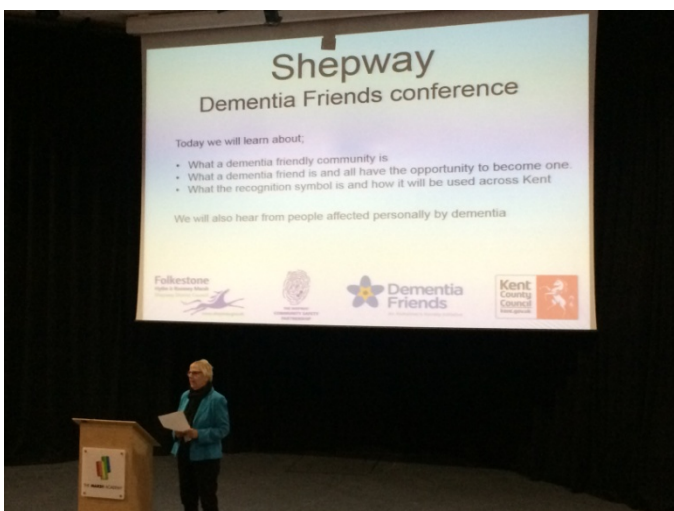
The Health and Wellbeing sub group is chaired jointly by a representative from KCC Public Health and the South East Coastal Clinical Commissioning Group. The group is focussing on the Intervention and Brief Advice (IBA) training for frontline staff to help identify those in need of services and signposting them.

There is an emphasis on trying to get middle aged women accessing Turning Point services where required as this is a growing target group that quite often do not perceive that they may be developing a problem. KCC Online IBA has developed a tool so individuals can see whether they are drinking at safe levels. There are an estimated 272,000 people in Kent

who are at high risk of alcohol-related problems. Many people don't know how much they drink and how it might be affecting their health, work and relationships. There is a quiz on the KCC website for people to be able to monitor how much they are drinking on a regular basis.



Men & Women



In January 2017, the partnership held a Dementia Conference where more than 70 people from across Shepway have pledged to become Dementia Friends. The event, the first of its kind in the district, was aimed to increase understanding of the condition and how it can affect different people in different ways; explained the best ways to help those living with it and encouraged people to become a Dementia Friend. Guests were also given a personal experience of living with dementia, heard from a carer and took part in a 'match the broken sentence' exercise.

FUNDING 2017-18

The Shepway CSP will receive £28,858 for financial year 2017-18. Funding is pass-ported through the Police and Crime Commissioner's budget. The CSP's four priority sub-groups will each be allocated £6,000 a year to spend. £2,500 is allocated to Domestic Homicide Reviews. Remaining funds will be used for projects and expenditure as it occurs to deal with community safety and health and well being issues as they arise.

PROJECT TITLE	FUNDING	THEMES	LEAD
	2017-18		
	£28,858.00		
Safeguarding	£6,000.00	Domestic Abuse	KCC Early Help
		Child Sexual Exploitation	
		Counter Terrorism , Prevent and Vulnerable Persons	
		Youth Diversion	
		Trafficking	
		People Exploitation	
Environment - Safer, Cleaner, Greener	£6,000.00	Built Environment	CSU, SDC
		New Housing	
		Quality of Life	
		Anti-social Behaviour	
		Community Re-assurance	
Vulnerability and Reoffending	£6,000.00	Preventing Offending	Kent Police
		Integrated Offender Management	
		Organised Crime Groups (Serious & Organised Crime)	
		Gangs	
		Migration	
		Vulnerable victims	
		Social injustice priority areas	
		Changing & Emerging Communities	
Health & Wellbeing	£6,000.00	Drugs and Legal Highs	KCC Public Health/ SKC CCG
		Alcohol	
		Mental Health	
		Active Communities	
		Obesity	
		Dementia	
		Ageing Population	
Fluid Pot	£2,358.00		
DHR	£2,500.00		
TOTAL	£28,858.00		

SUMMARY

The Shepway CSP faces significant challenges over the coming year against a background of ongoing financial pressures and increased resource requests. However, it has seen an increase in enthusiasm and support from all members to ensure that community safety is at the forefront of their work to support the wider health and wellbeing of all residents and communities in the district. This is reflected in the move from priorities around domestic abuse, substance misuse and anti-social behaviour to more stretching current and relevant themes that can affect communities. Included there are some of the areas of work that may not be currently significant in Shepway, but are important to recognise as potential factors that may occur and need to be considered.

The Partnership is supported by the Shepway Community Safety Unit, which is a virtual multi-partner agency flow of information, support and direction. The daily police briefings and weekly multi-agency partner briefings have seen significant pieces of work being undertaken, particularly around “hot spot” locations and supporting at risk and vulnerable individuals.

Tackling crime and ASB is everyone’s business. All the agencies involved in the CSP are committed to making Shepway safe by providing high quality services in an efficient and effective way. An emphasis is on tackling the crimes that are committed most frequently and which have the most impact on communities. Partners are also working hard to increase the confidence in society so that victims feel able to report detrimental behaviours and crimes. More work will be undertaken in the coming year to work with communities to ascertain their issues and what additional work they would like the Shepway CSP to focus on. In addition, the CSP will continue to work closely with all other partnership bodies including, to name a few, the South East Coast Health and Well Being Board, Local Children’s Partnership Group and Shepway Youth Advisory Group.

GLOSSARY

ASB	Anti-social behaviour
CCG	Clinical Commissioning Group
CIN	Children In Need
CP	Child Protection
CSE	Child Sexual Exploitation
CSU	Community Safety Unit
CSP	Community Safety Partnership
DA	Domestic Abuse
IDVA	Independent Domestic Violence Adviser
KSSCRC	Kent, Surrey and Sussex Community Rehabilitation Company
LAC	Looked After Children
MARAC	Multi-agency Risk Assessment Conference (DA)
IOM	Integrated Offender Management
PSPO	Public Space Protection Order
SA	Strategic Assessment



THE SHEPWAY
COMMUNITY SAFETY
PARTNERSHIP

Folkestone

Hythe & Romney Marsh

Shepway District Council



www.shepway.gov.uk



Kent Fire &
Rescue Service



Kent
Police



NHS
*South Kent Coast
Clinical Commissioning Group*